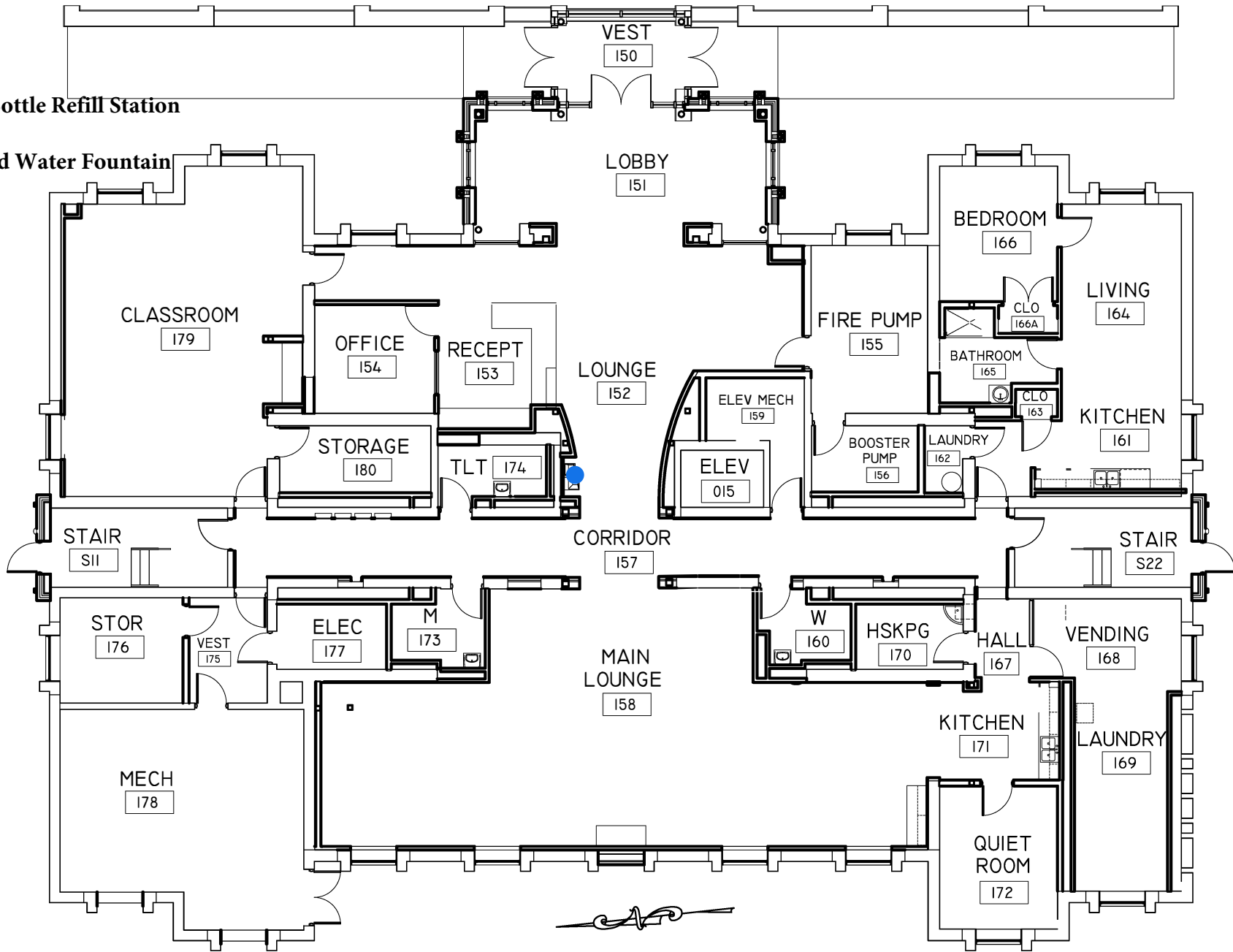


● Water Bottle Refill Station

● Standard Water Fountain

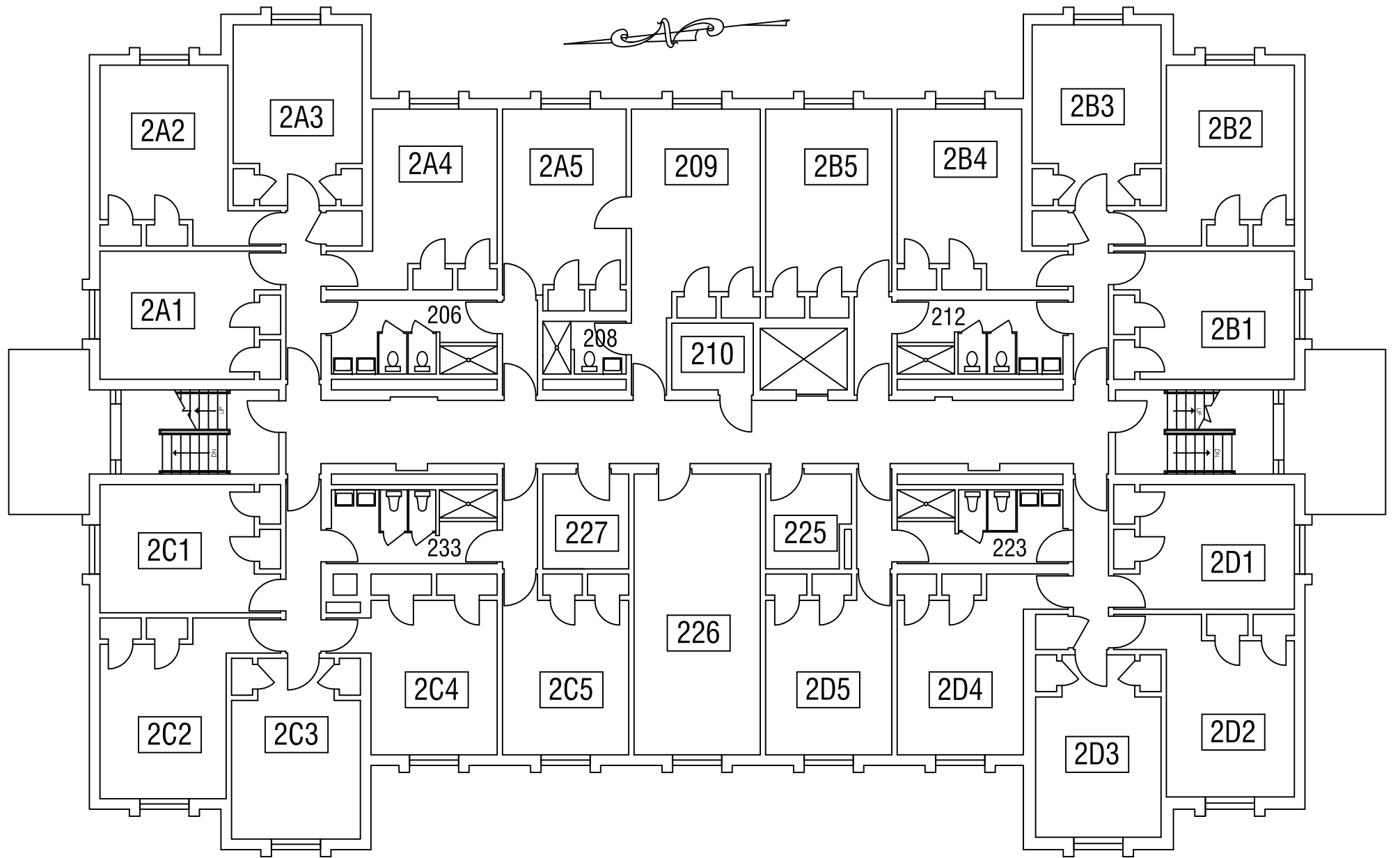


DWG. NO.:	REVISION DATE:
A-I	05-13-2018
BLDG. CODE:	SCALE:
CR	NTS
	DESIGN BY:
	PLA
	CHECKED BY:
	JCD

**RECORD FLOOR PLAN
CHESTER HALL BUILDING**

FIRST FLOOR PLAN

SALISBURY UNIVERSITY
FACILITIES PLANNING & CAPITAL PROJECTS
ARCHITECTURAL AND ENGINEERING SERVICES
1101 CAMDEN AVENUE
SALISBURY, MARYLAND 21801
410 - 543 - 6215



DWG. NO.:

A-2

BLDG. CODE:

CR

REVISION DATE:

08-22-2018

SCALE:

NTS

DESIGN BY:

PLA

CHECKED BY:

JCD

RECORD FLOOR PLAN
CHESTER HALL BUILDING

EXISTING
SECOND FLOOR PLAN
(TYPICAL OF FLOORS 2-6)

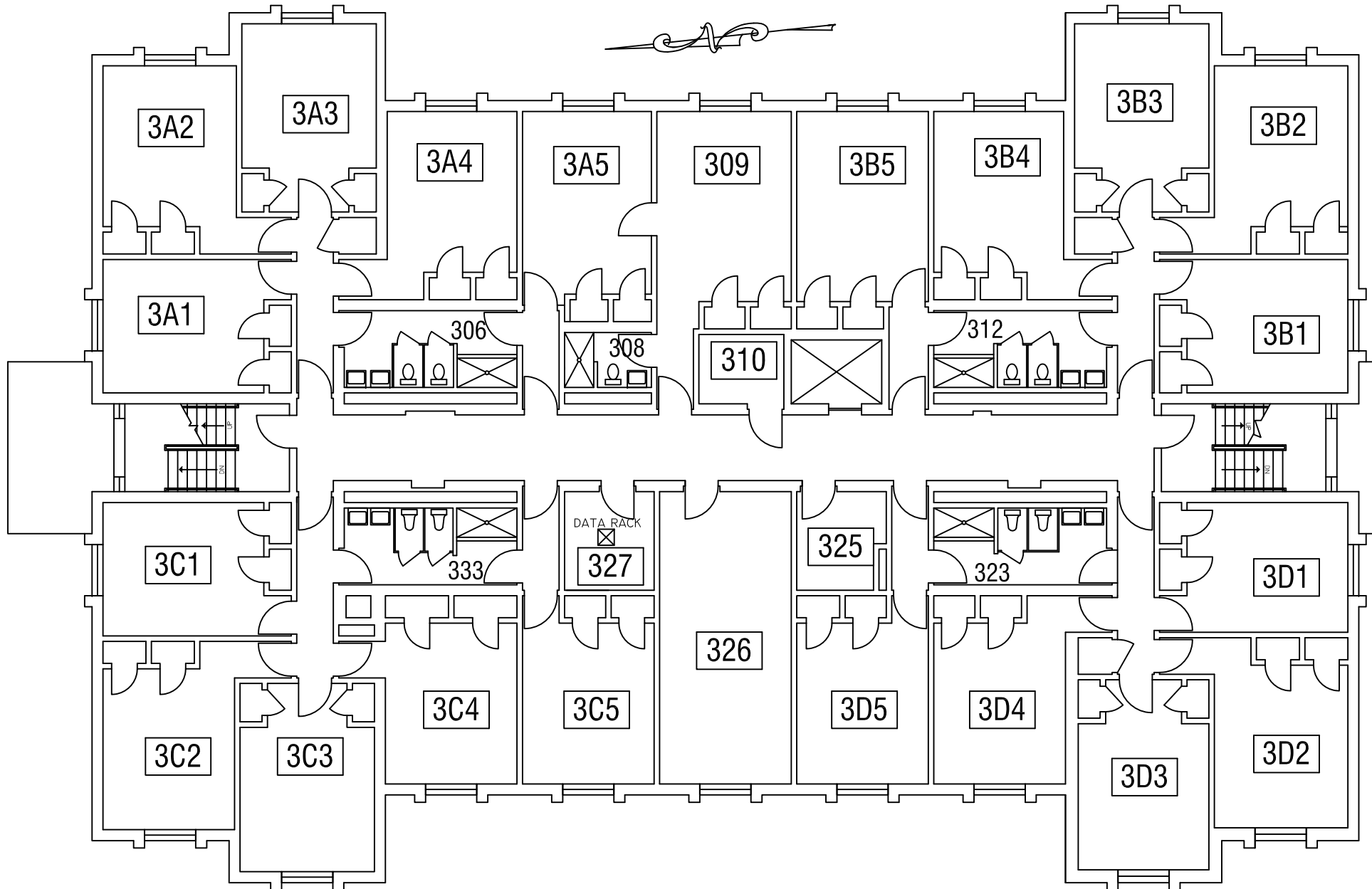
SALISBURY UNIVERSITY

FACILITIES PLANNING & CAPITAL PROJECTS
ARCHITECTURAL AND ENGINEERING SERVICES

1101 CAMDEN AVENUE

SALISBURY, MARYLAND 21801

410 - 543 - 6215

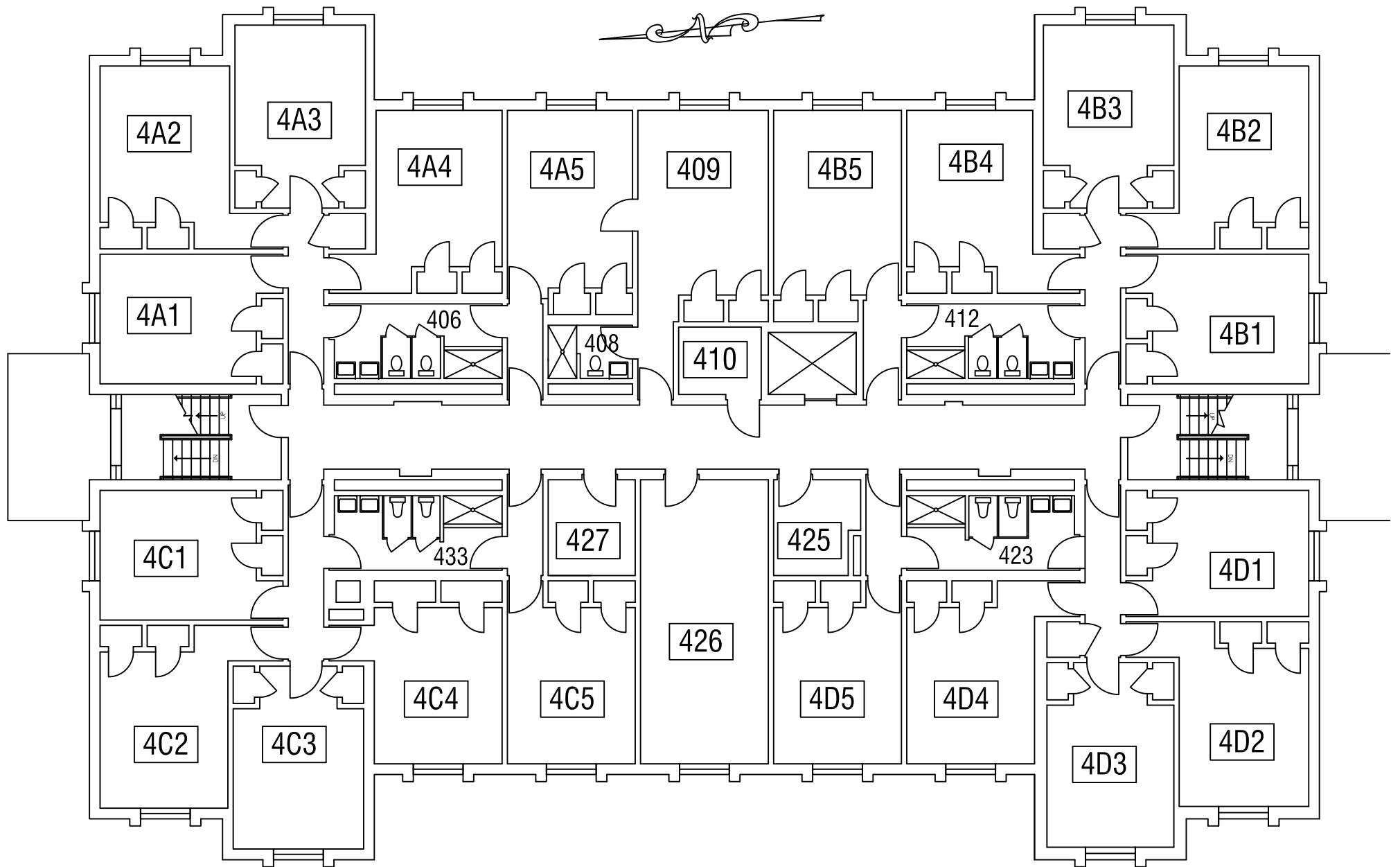


DWG. NO.:	REVISION DATE:
A-3	08-22-2018
BLDG. CODE:	SCALE:
CR	NTS
	DESIGN BY:
	PLA
	CHECKED BY:
	JCD

RECORD FLOOR PLAN
CHESTER HALL BUILDING

THIRD FLOOR PLAN

SALISBURY UNIVERSITY
 FACILITIES PLANNING & CAPITAL PROJECTS
 ARCHITECTURAL AND ENGINEERING SERVICES
 1101 CAMDEN AVENUE
 SALISBURY, MARYLAND 21801
 410 - 543 - 6215



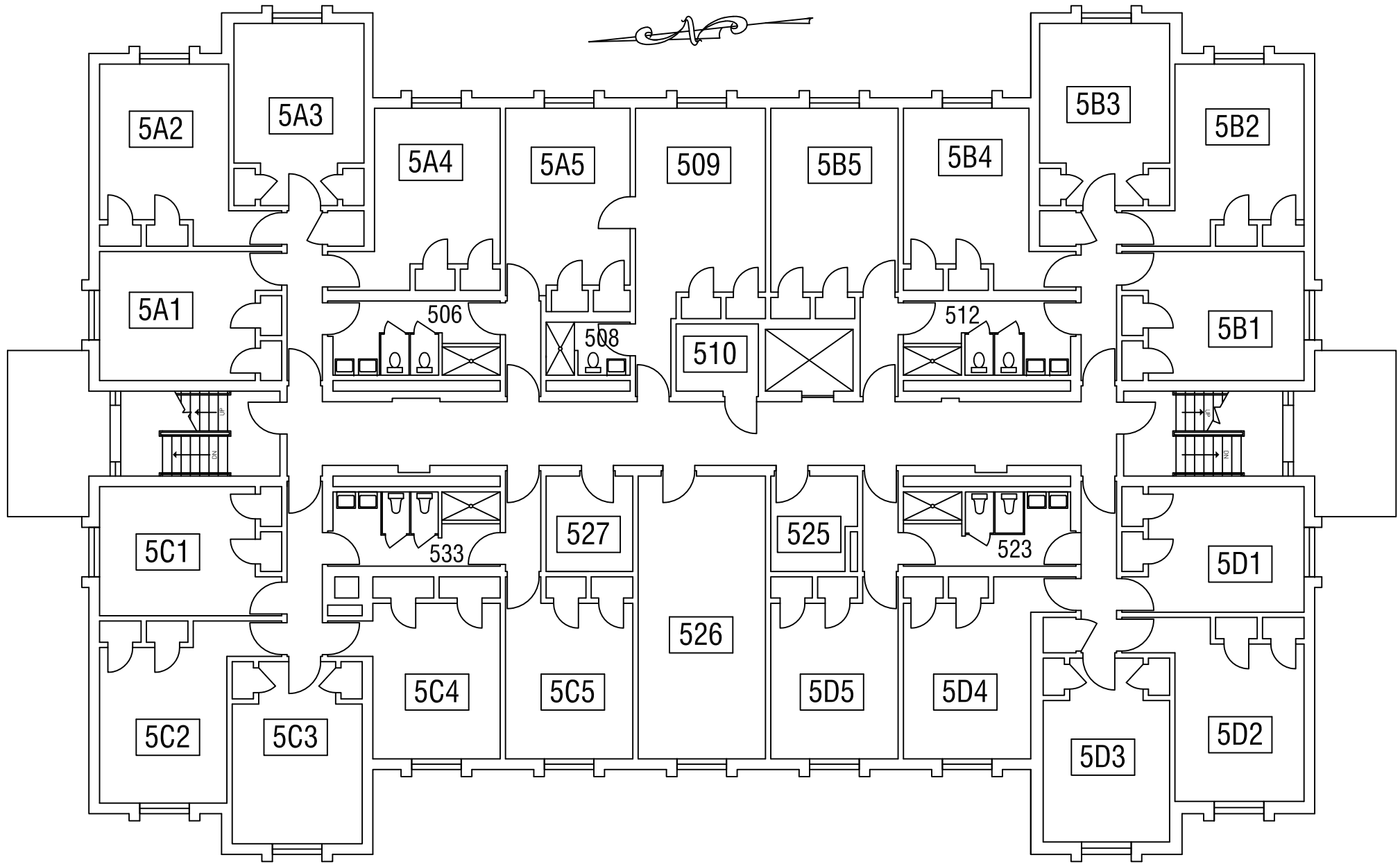
DWG. NO.:
A-4
 BLDG. CODE:
CR

REVISION DATE:
08-22-2018
 SCALE:
NTS
 DESIGN BY:
PLA
 CHECKED BY:
JCD

**RECORD FLOOR PLAN
 CHESTER HALL BUILDING**

FOURTH FLOOR PLAN

SALISBURY UNIVERSITY
 FACILITIES PLANNING & CAPITAL PROJECTS
 ARCHITECTURAL AND ENGINEERING SERVICES
 1101 CAMDEN AVENUE
 SALISBURY, MARYLAND 21801
 410 - 543 - 6215



DWG. NO.:

A-5

BLDG. CODE:

CR

REVISION DATE:

08-22-2018

SCALE: NTS

DESIGN BY: PLA

CHECKED BY: JCD

RECORD FLOOR PLAN
CHESTER HALL BUILDING

FIFTH FLOOR PLAN

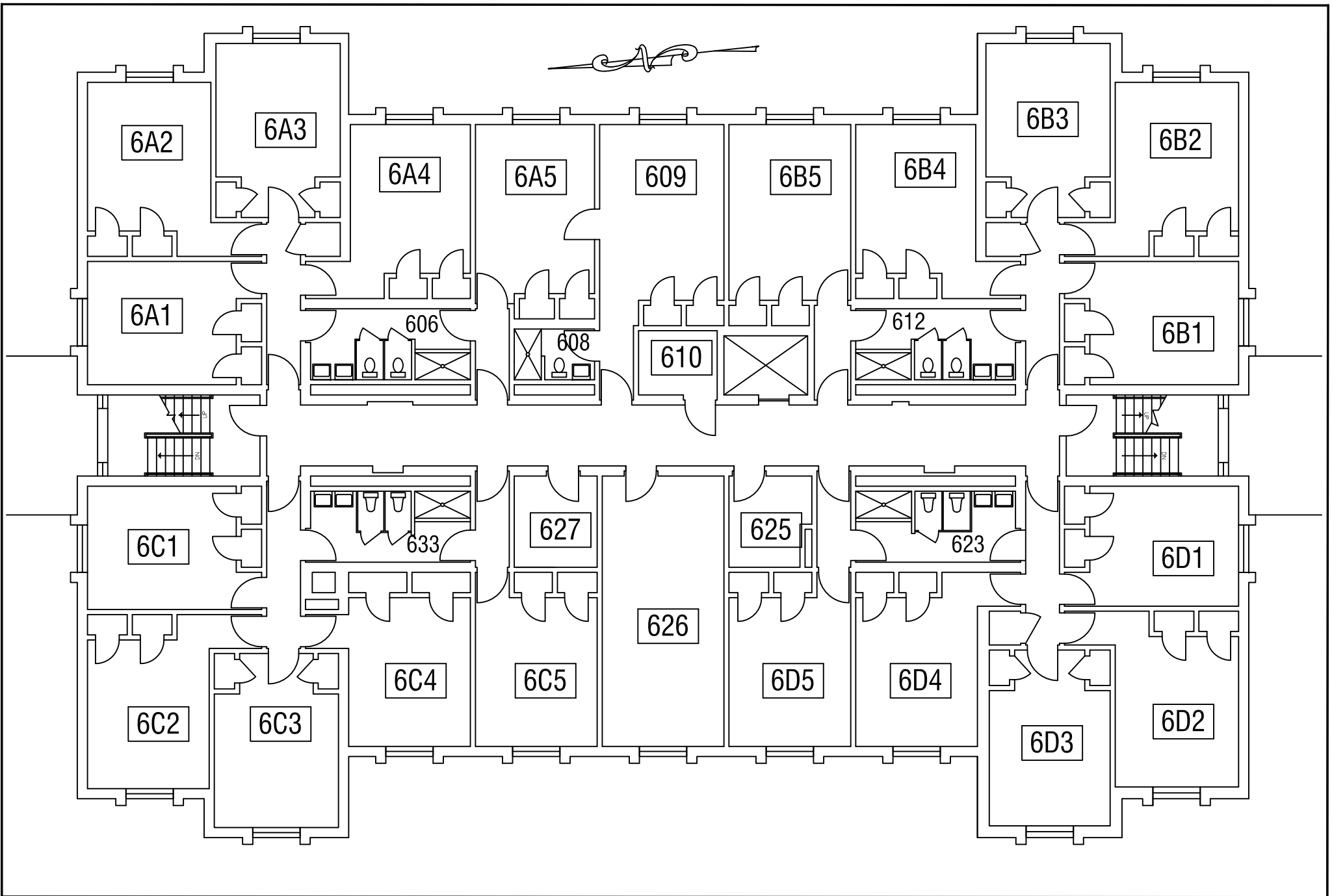
SALISBURY UNIVERSITY

FACILITIES PLANNING & CAPITAL PROJECTS
ARCHITECTURAL AND ENGINEERING SERVICES

1101 CAMDEN AVENUE

SALISBURY, MARYLAND 21801

410 - 543 - 6215



DWG. NO.:	REVISION DATE:
A-6	08-22-2018
BLDG. CODE:	SCALE:
CR	NTS
	DESIGN BY:
	PLA
	CHECKED BY:
	JCD

RECORD FLOOR PLAN
CHESTER HALL BUILDING

SIXTH FLOOR PLAN

SALISBURY UNIVERSITY
 FACILITIES PLANNING & CAPITAL PROJECTS
 ARCHITECTURAL AND ENGINEERING SERVICES
 1101 CAMDEN AVENUE
 SALISBURY, MARYLAND 21801
 410 - 543 - 6215